

Cottage Yacht®

SELF-SHIPPING INTERMODAL SHELTER

- ✓ No Assembly Required.
- ✓ Deliver & Occupy.
- ✓ Five Water Sources.
- ✓ Cistern Roof & Filters.
- ✓ ~\$3,500 materials mfg.

Disaster!

*It strikes randomly, often,
and does not respect real estate values.*

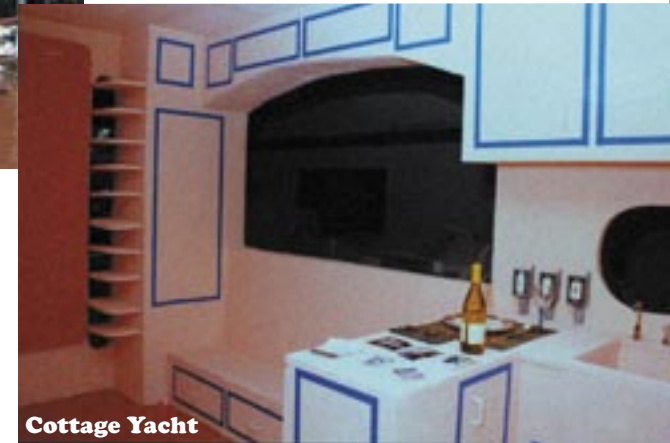
Of immediate importance for survivors: medical attention followed by shelter, water, sanitation, food and clothing. Most disaster recovery organizations provide tents. In some cases expensive Mobile Homes or RV's are provided. Transportable Emergency Shelters – 'Cottage Yachts' – eliminate the squalor of tent encampments and replace expensive, non-recoverable Mobile Homes or RV's with fully re-usable Cottage Yachts.



*San Francisco? ~ London?
New Orleans? ~ Beijing?
Los Angeles? ~ TaiPei?
New York? ~ Tokyo?
Miami? ~ Paris?*



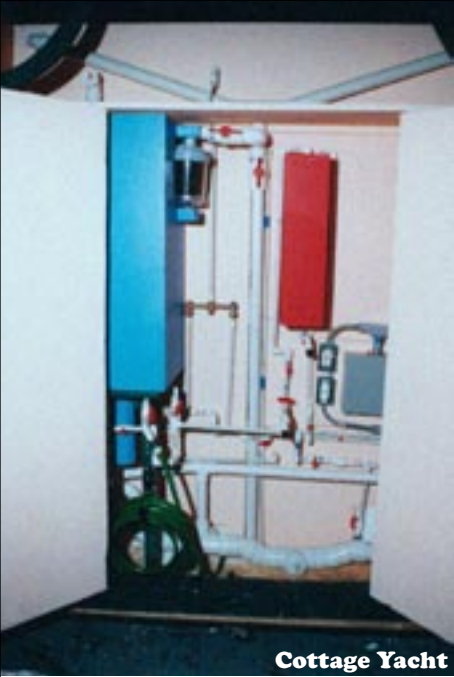
Cottage Yacht



Cottage Yacht

The Cottage Yacht 'wall' is molded of the same soft, strong dual-walled rotomold-polyethylene as the "Step 2®" or "Little Tikes®" playground equipment that you see at Toys-R-Us. All 'furniture' is molded into the wall along with sinks, counters, cabinets and 'Murphy Bed' brackets. Wall cavities are filled with several inches of foam to provide insulation.

Twenty-Foot Cottage Yachts use the standard cast-steel corner blocks and steel corner posts of International Shipping Containers. They meet 100% of all ISO specifications in size and strength for delivery to every port in the world using the same fork-lift and crane-handling features built into all containers.



Cottage Yacht

In direct manufacturing costs, a Cottage Yacht would cost about \$3,500 for steel corner blocks and posts, polyethylene rotomolding, water tank, filters, plumbing, electrical and assembly. The built-in 'Utility Shed' enables FIVE different water-source connections. The large EPA-approved polyethylene water tank receives filtered rain water from a cistern-roof, water-truck delivery or conventional plumbing fittings from central water supplies. A 5-Gallon Water Bottle holder is molded into place. 'Gray water' and 'black water' management is

handled internally within the Cottage Yacht that provides complete plumbing connections to central waste lines. Optional solar panels can be built into the cistern roof. An optional RV-Style Air Conditioner can be installed on the Utility Shed shelf and connected to the cottage's central duct system.



Medical supplies, food, clothing and water can be packed inside Cottage Yachts for shipment to disaster areas. Currently, containers that are shipped to disaster areas cannot be occupied. This double-advantage is significant in times of disaster.

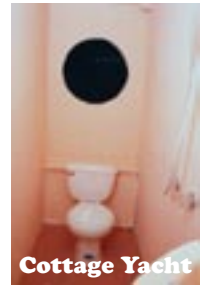


Strikingly complex automobiles are manufactured in quantity and inexpensively. Can we not do the same for transportable shelters with no moving parts?



Cottage Yacht

The complete and private bathroom (3' x 8') between the Utility Shed and kitchen features a 'wet bath' with a floor drain as in a yacht. The toilet, too, can be molded into place.



Cottage Yacht

Foam filled 'beds' are made of the same soft polyethylene as the walls and furniture. A double-bed and child's bunk bed folds down.

The built-in couch provides a fourth bed. A folding table and chairs snap onto the underside of the rotomold Murphy Bed.



Cottage Yacht

In the United States, insurance companies, NGO's and FEMA can never recover the expensive RV's and Mobile Homes that they sometimes purchase for disaster victims. The Cottage Yacht provides recoverable shelters and is also a practical substitute for expensive, long term hotel stays that are common in disaster situations. To enable recovery and re-use, all interior corners of Cottage Yachts are rounded. The few seams are 'plastic-welded'. The Cottage Yacht unit, including the rotomold beds, are intended to be pressure washed on the inside as well as the outside for storage and re-use. A standard hose-bib is included in the bathroom;

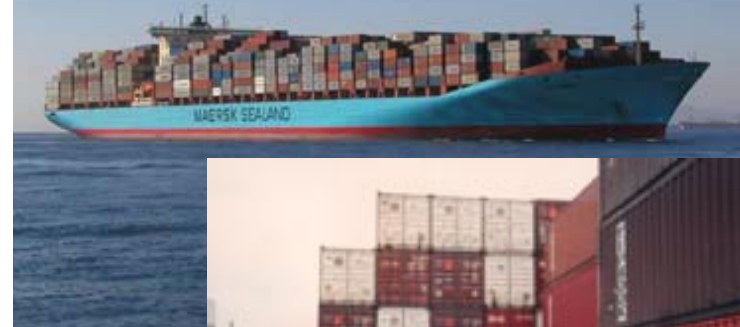


Cottage Yacht



be end-delivered by many types of trucks, including tow-trucks. 2,160 Cottage Yachts can be stacked 9-high for storage in **One Acre.** Cities vulnerable to disaster — and state/federal agencies — need to purchase and store fully washable, recoverable and easily transportable Cottage Yachts.

Modern container ships can hold about 14,000 20' Cottage Yachts. Trains can transport about 1,600 at a time. Cottage Yachts can



Cottage Yacht

Shelves and furniture are part of the parent 'wall' molds. Life expectancy for Cottage Yachts is expected to exceed 100 years.

Other uses for Cottage Yachts include flexible military housing, temporary shelters, remote construction housing, jobsite housing instead of motels, outback research housing, homeless shelters, replacements for cardboard shacks, healthier trailers, inner-city emergency housing, 'Cottage-Yacht Cabin-Motels,' backyard 'guest houses' and inexpensive alternatives for Mobile Homes. The changing requirements of the military — with random international deployment and a simultaneous demand for increased privacy — makes these units particularly appealing. Note that large military transport planes regularly ship 20' shipping containers. For more permanent installations a simple, robust 'Foundation Kit' is used. An 'Instant Cottage-Yacht City' can be rapidly assembled. Shipping Containers on the market for years include: Water Tanker, Electrical Generator Container, Fuel Tanker, Communications Container.



The look and feel of rotomold plastics is seen here in a detail of a Little Tikes® playground piece.

Photos of Cottage Yachts are taken of a foam mockup. CAD drawings are available.